

MODULE 7 L05

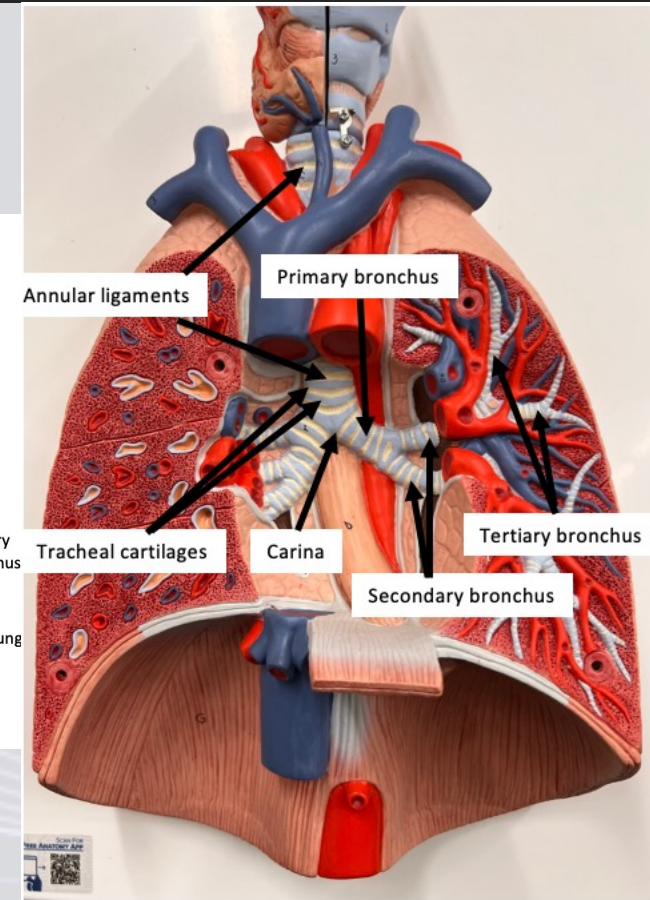
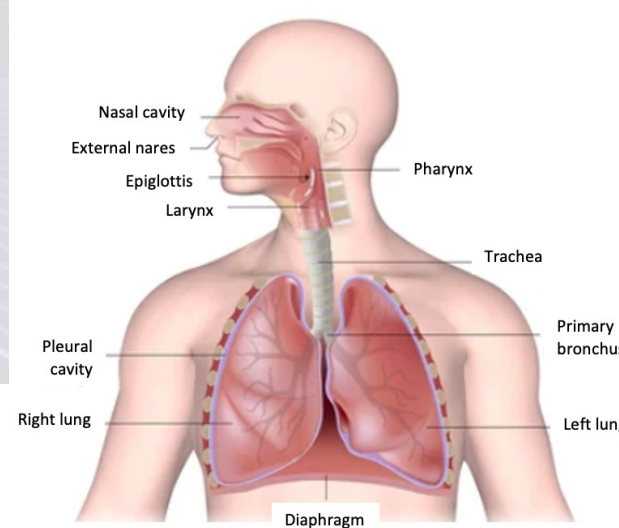
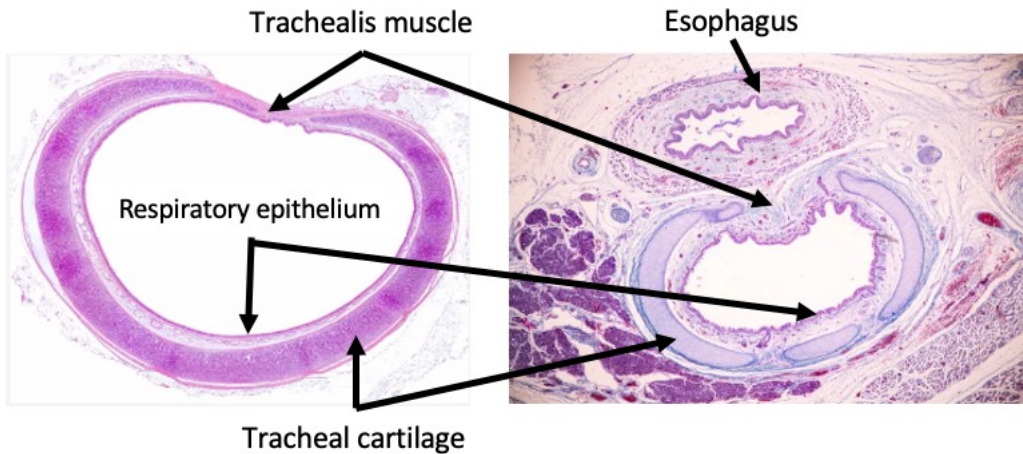
Lower Respiratory Tracts

Dr. Lisa Brinn
lbrinn@fiu.edu



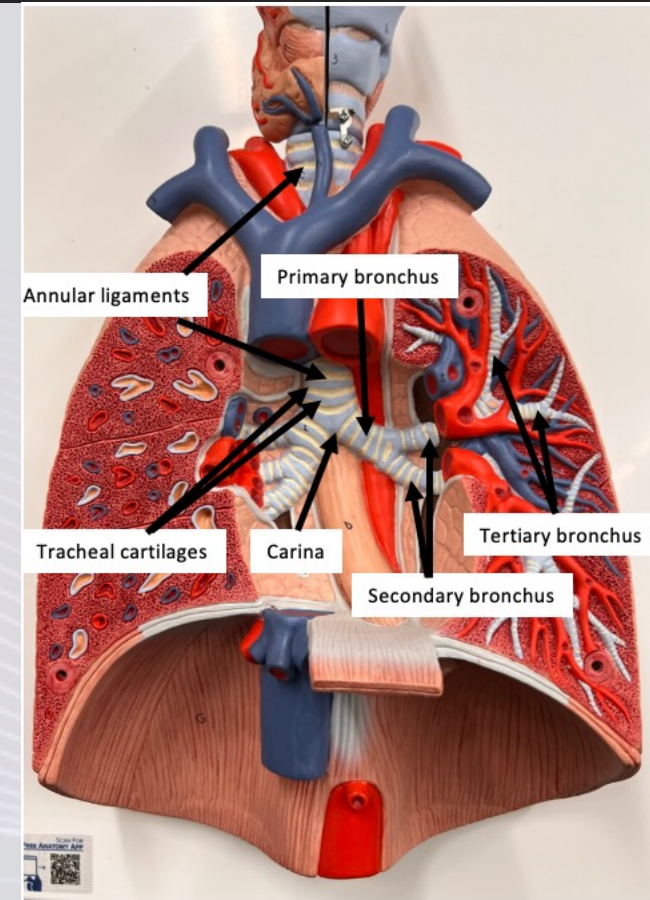
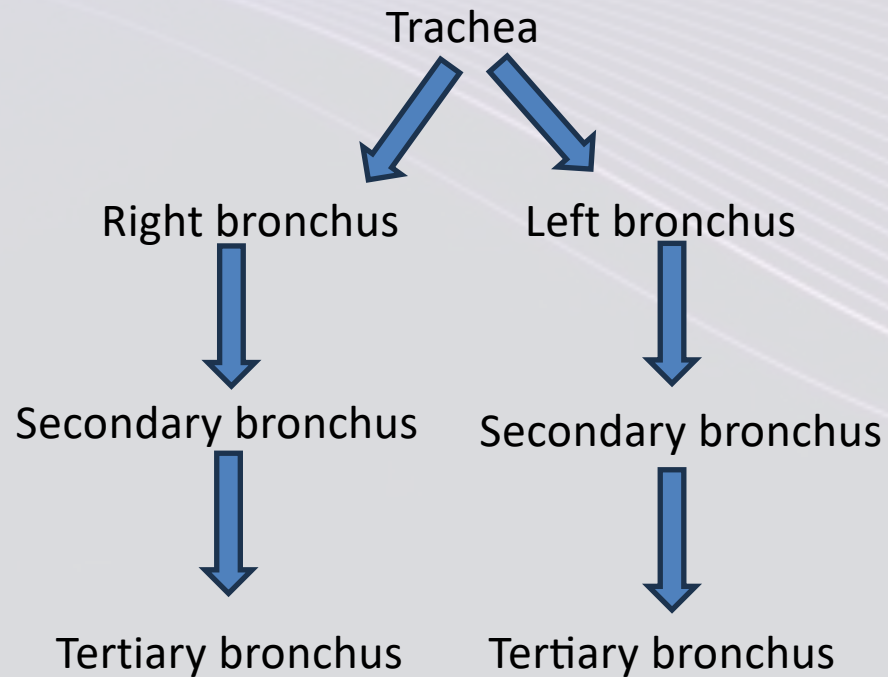
5. Trachea

- Also known as windpipe
- Contains 15-20 tracheal cartilages
 - ❖ Each is bound by annular ligaments
 - ❖ C-shaped



Bronchi

- Carina
 - ❖ Internal ridge between right and left bronchi
 - Right is larger in diameter than left



Lungs

- Right lung
 - ❖ 3 lobes (superior, middle, inferior)
 - ❖ 2 fissures (oblique and horizontal)
- Left lung
 - ❖ 2 lobes (superior and inferior)
 - ❖ 1 fissure (oblique)

